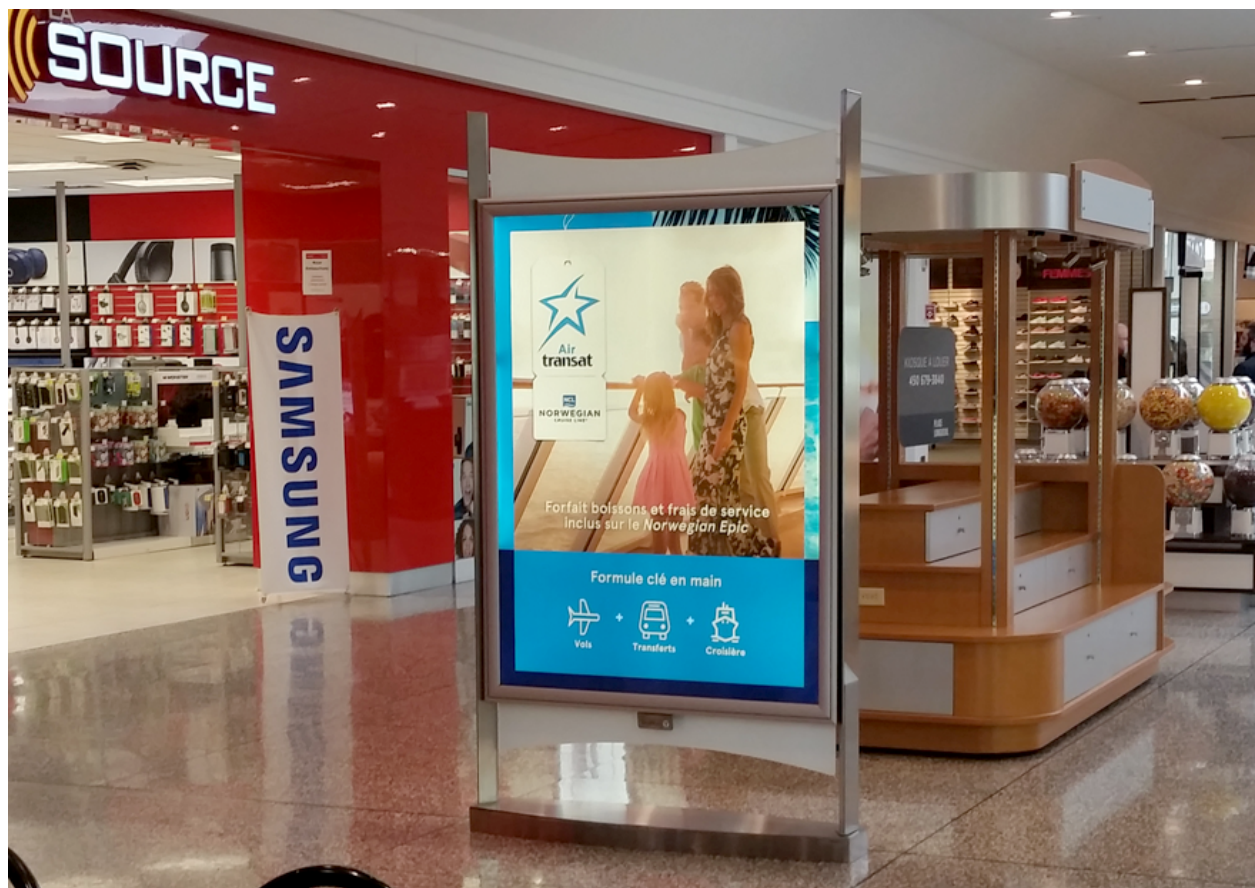


PLACE LONGUEUIL

Longueuil, Quebec



POSTERS

Place Longueuil is an important indoor shopping centre located at the strategic entry point to Montréal's South Shore, the second largest suburb in the Greater Montréal area. The shopping centre is close to the University of Sherbrooke campus, located in a flourishing residential neighbourhood, near the Jacques-Cartier and Victoria bridges, several major roads and highways, as well as the Longueuil-Université-de-Sherbrooke metro station. The shopping centre is also easily accessible by the public transit system.



GENERAL INFORMATION

Annual traffic	5 200 000
Number of stores	120+
Gross area	415 000 ft ²
Market population	304 375
Average household income	\$ 62,115

Source : The centre

PRODUCTS

Posters
Digital Displays
Specialty Media

825 Saint-Laurent St. Ouest Longueuil,
QC, Canada, J4K 2V1

placelongueuil.com